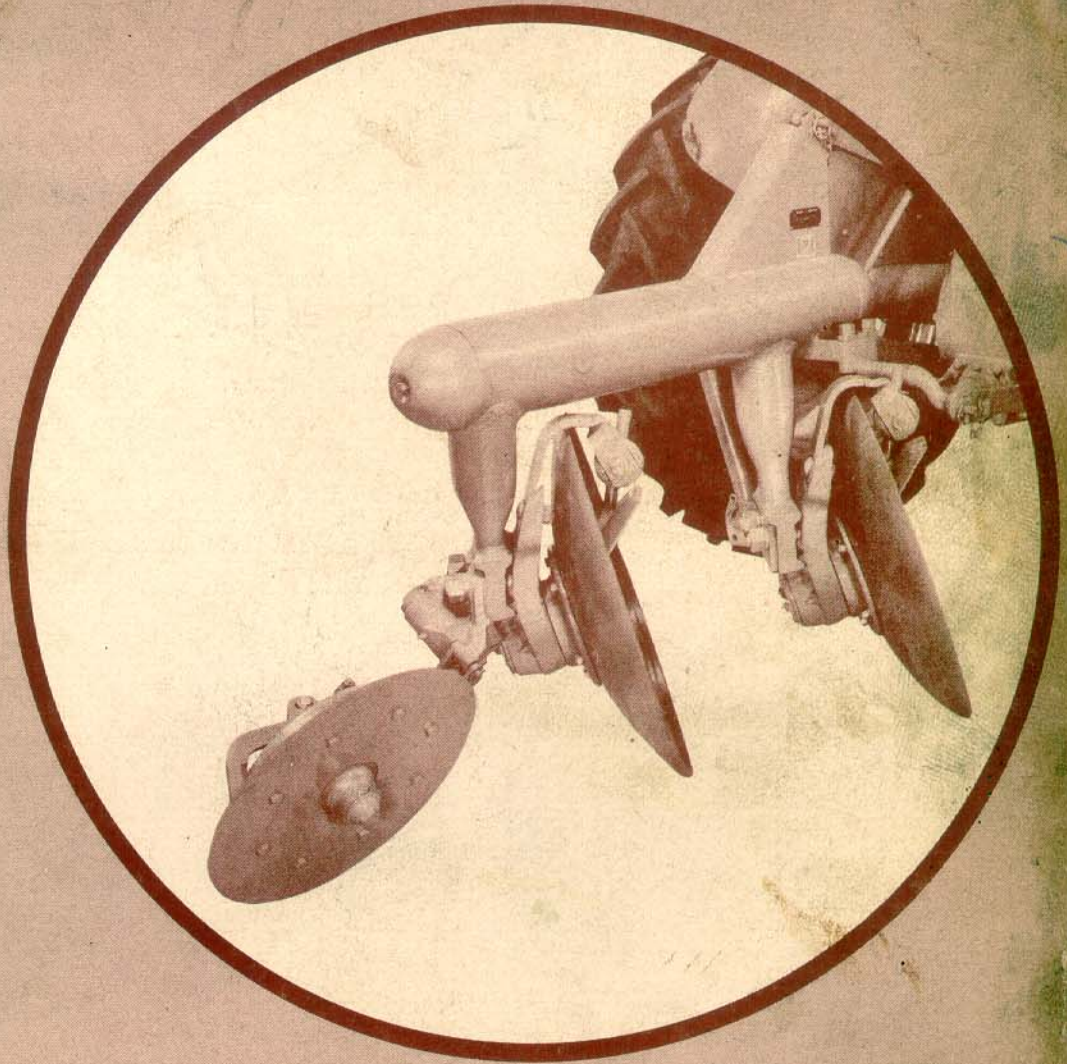




PARTS BOOK

FOR P-AO-20 AND P-AO-21 DISC PLOWS

◀ FOR A-PO-20 AND A-PO-21 DISC PLOWS ▶



Form No. 693 004 M1

Replaces 0-3433A

FERGUSON DIVISION

MASSEY-HARRIS-FERGUSON, INC.

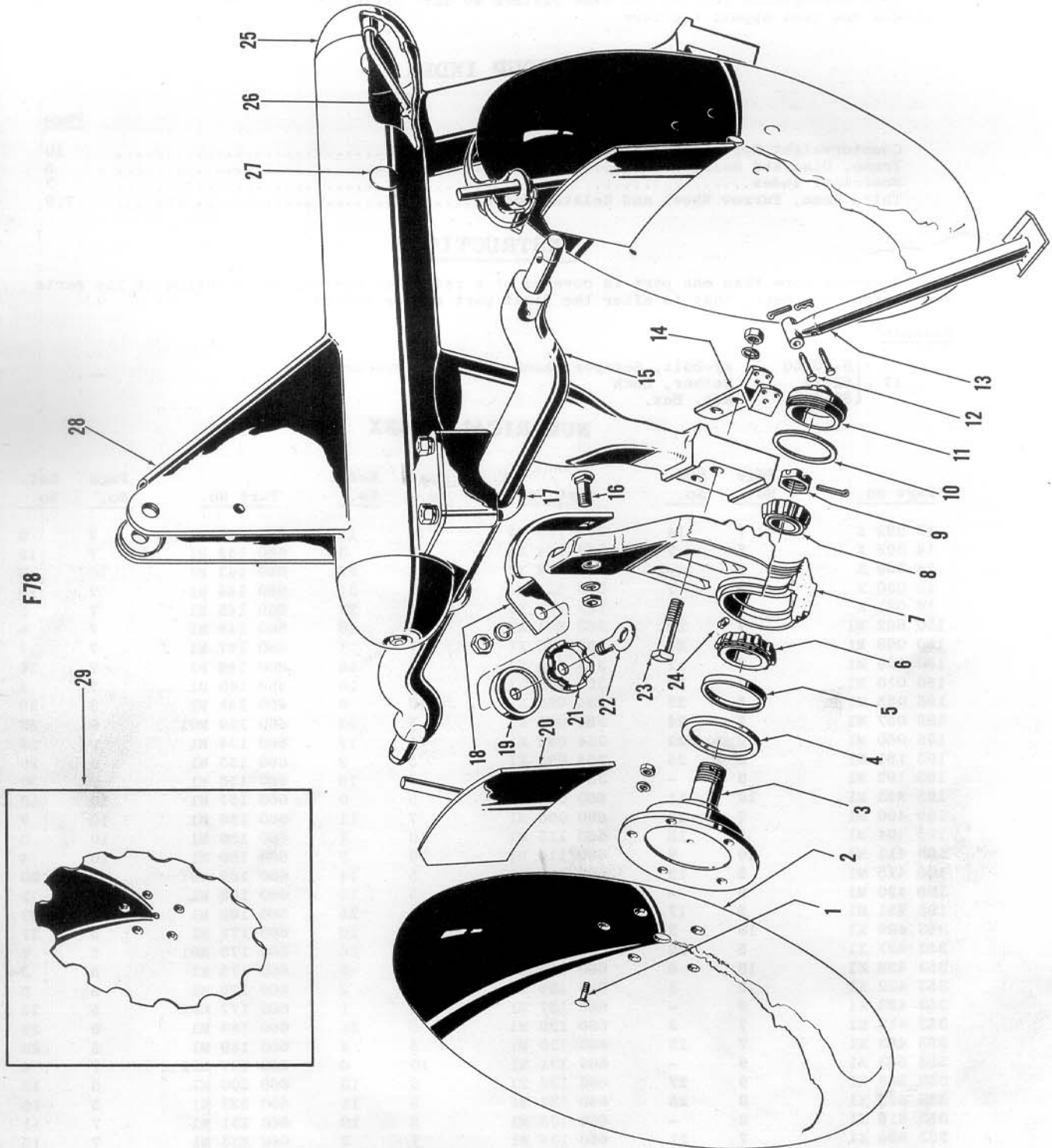
RACINE, WISCONSIN

7½M-3-55-K

PRINTED IN U. S. A.

www.ntractorclub.com

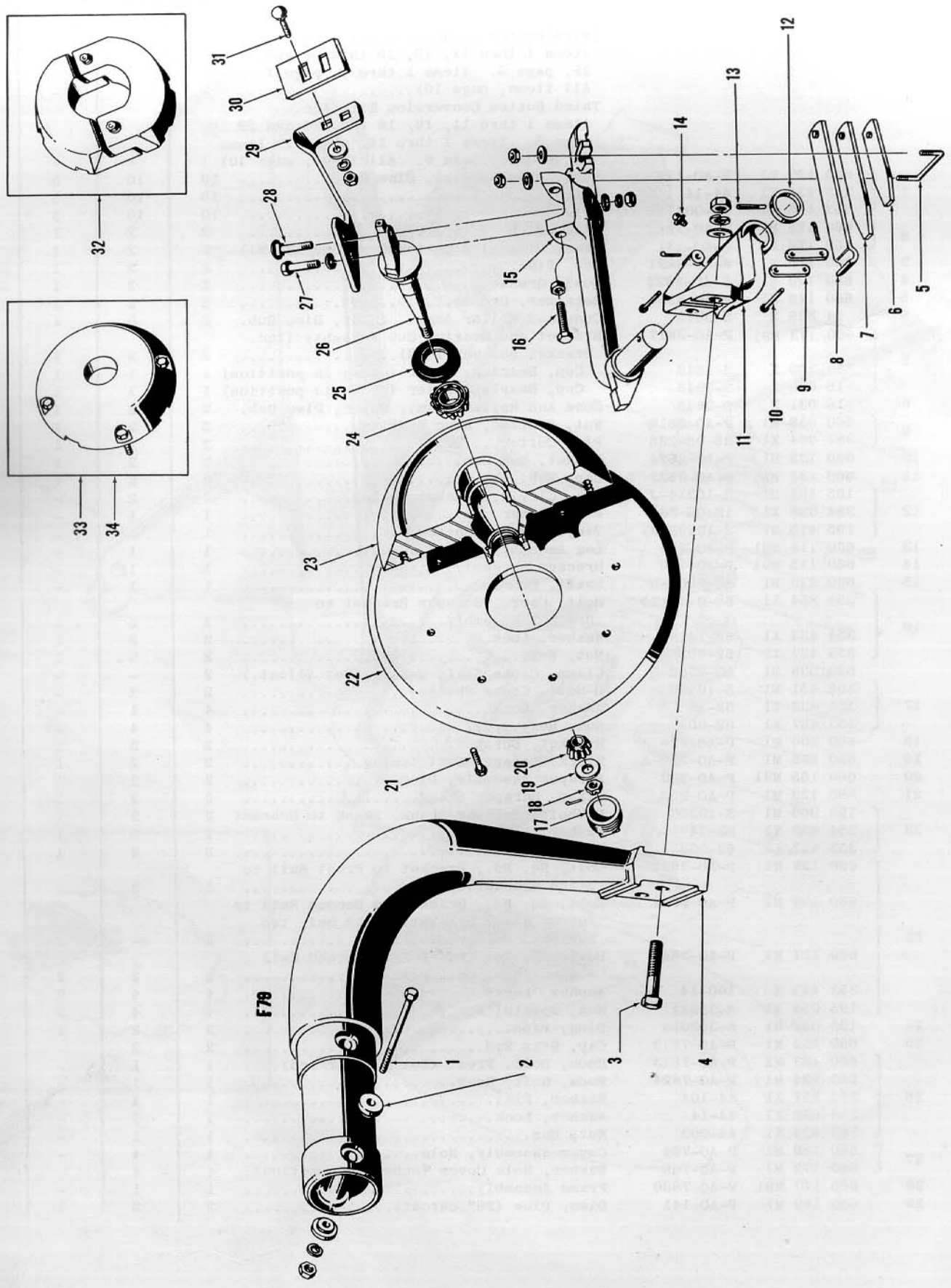
FRAME, DISC AND RELATED PARTS



FRAME, DISC AND RELATED PARTS

Ref. No.	Part No.	Replaces	Description	No. Req.			
				P-AO-20	P-AO-21	P-AO-98	P-AO-99
			Third Bottom Conversion Kit (Inc. items 1 thru 11, 16, 18 thru 24 and 29, page 5. Items 1 thru 4, page 7. All items, page 10).....	-	1	-	-
			Third Bottom Conversion Kit (Inc. items 1 thru 11, 16, 18 thru 24 and 29 page 5. Items 1 thru 16, page 7. Items 26 thru 28, page 9. All items, page 10)	1	-	-	-
1	660 127 M1	P-AO-126	Bolt, Plow Special, Disc Hub.....	10	10	5	5
	353 432 X1	44-14	Washer, Lock.....	10	10	5	5
	353 426 X1	44-003	Nut, Hex.....	10	10	5	5
2	660 125 M1	P-AO-121	Disc, Plow (3/16").....	2	2	1	1
	660 126 M1	P-AO-131	Disc, Plow (1/4 Optional w/ 660 125 M1)	2	2	1	1
3	660 175 M1	P-AO-3821	Hub, Disc.....	2	2	1	1
4	660 130 M1	P-AO-3822	Seal, Grease.....	2	2	1	1
5	660 176 M1	P-AO-3823	Retainer, Grease.....	2	2	1	1
6	14 309 X	S-9848	Cone and Roller Assm., Inner, Disc Hub.	2	2	1	1
	660 173 M91	P-AO-3817	Bracket and Bearing Cup Assembly (Inc. Bracket not serviced).....	2	2	1	1
7	14 308 X	S-9849	Cup, Bearing, Inner (shown in position)	1	1	1	1
	16 030 X	S-9846	Cup, Bearing, Outer (shown in position)	1	1	1	1
8	16 031 X	S-9845	Cone and Roller Assm., Outer, Disc Hub.	2	2	1	1
	660 088 M1	P-AO-3819	Nut, Slotted, Disc Bearing.....	2	2	1	1
9	354 094 X1	25-05-225	Pin, Cotter.....	2	2	1	1
10	660 132 M1	P-AO-3824	Gasket, Hub Cap.....	2	2	1	1
11	660 133 M1	P-AO-3825	Cap, Hub.....	2	2	1	1
	195 404 M1	S-10214-J	Pin, Clevis, Bracket to Leg.....	2	2	-	-
12	354 086 X1	12-05-88	Pin, Cotter.....	1	1	-	-
	195 415 M1	S-10202-B	Pin, Internal Cotter.....	1	1	-	-
13	660 118 M91	P-AO-780	Leg Assembly, Stand.....	1	1	-	-
14	660 115 M91	P-AO-790	Bracket Assembly, Stand.....	1	1	-	-
15	660 223 M1	AO-7805-D	Shaft, Cross.....	1	1	-	-
	353 864 X1	62-011-175	Bolt, Carr., Scraper Bracket to Bracket Assembly.....	2	2	1	1
16	354 433 X1	62-14	Washer, Lock.....	2	2	1	1
	353 427 X1	62-003	Nut, Hex.....	2	2	1	1
	660 538 M1	AO-9588-D	Clamp, Cross Shaft U-Bolt (Not Illust.)	2	-	-	-
	195 451 M1	S-10400	U-Bolt, Cross Shaft.....	2	2	-	-
17	354 433 X1	62-14	Washer, Lock.....	4	4	-	-
	353 427 X1	62-003	Nut, Hex.....	4	4	-	-
18	660 200 M1	P-AO-226	Bracket, Scraper.....	2	2	1	1
19	660 135 M1	P-AO-227-A	Block, Scraper Positioning.....	2	2	1	1
20	660 165 M91	P-AO-220	Scraper Assembly, Disc.....	2	2	1	1
21	660 129 M1	P-AO-228	Clamp, Scraper Shank.....	2	2	1	1
	195 060 M1	S-10350	Eyebolt, Scraper Shank, Shank to Bracket	2	2	1	1
22	354 433 X1	62-14	Washer, Lock.....	2	2	1	1
	353 427 X1	62-003	Nut, Hex.....	2	2	1	1
	660 138 M1	P-AO-3841	Bolt, Sq. Hd., Bracket to Front Rail to Stand Bracket.....	2	2	-	-
	660 139 M1	P-AO-3842	Bolt, Sq. Hd., Bracket to Second Rail to Furrow Wheel Bracket.- When only two bottoms are used.....	2	-	-	-
23	660 137 M1	P-AO-3840	Bolt, Sq. Hd., Bracket to Second Rail - When Third Bottom is used.....	2	2	2	2
	353 443 X	100-14	Washer, Lock.....	4	4	2	2
	195 055 M1	S-33841	Nut, Special Hex.....	4	4	2	2
24	195 057 M1	S-353063	Plug, Pipe.....	2	2	1	1
25	660 122 M1	P-AO-7812	Cap, Beam End.....	2	2	-	-
	660 123 M1	P-AO-7813	Hook, Bolt, Front (Not Illustrated)....	1	1	-	-
	660 124 M1	P-AO-7824	Hook, Bolt, Rear.....	1	1	-	-
26	353 757 X1	44-104	Washer, Flat.....	1	1	-	-
	353 432 X1	44-14	Washer, Lock.....	1	1	-	-
	353 426 X1	44-003	Nut, Hex.....	1	1	-	-
	660 169 M1	P-AO-794	Cover Assembly, Hole.....	4	4	-	-
27	660 172 M1	P-AO-798	Washer, Hole Cover (shown in position).	4	4	-	-
28	660 177 M91	P-AO-7800	Frame Assembly.....	1	1	-	-
29	660 189 M1	P-AO-141	Disc, Plow (26" cutout).....	2	2	1	1

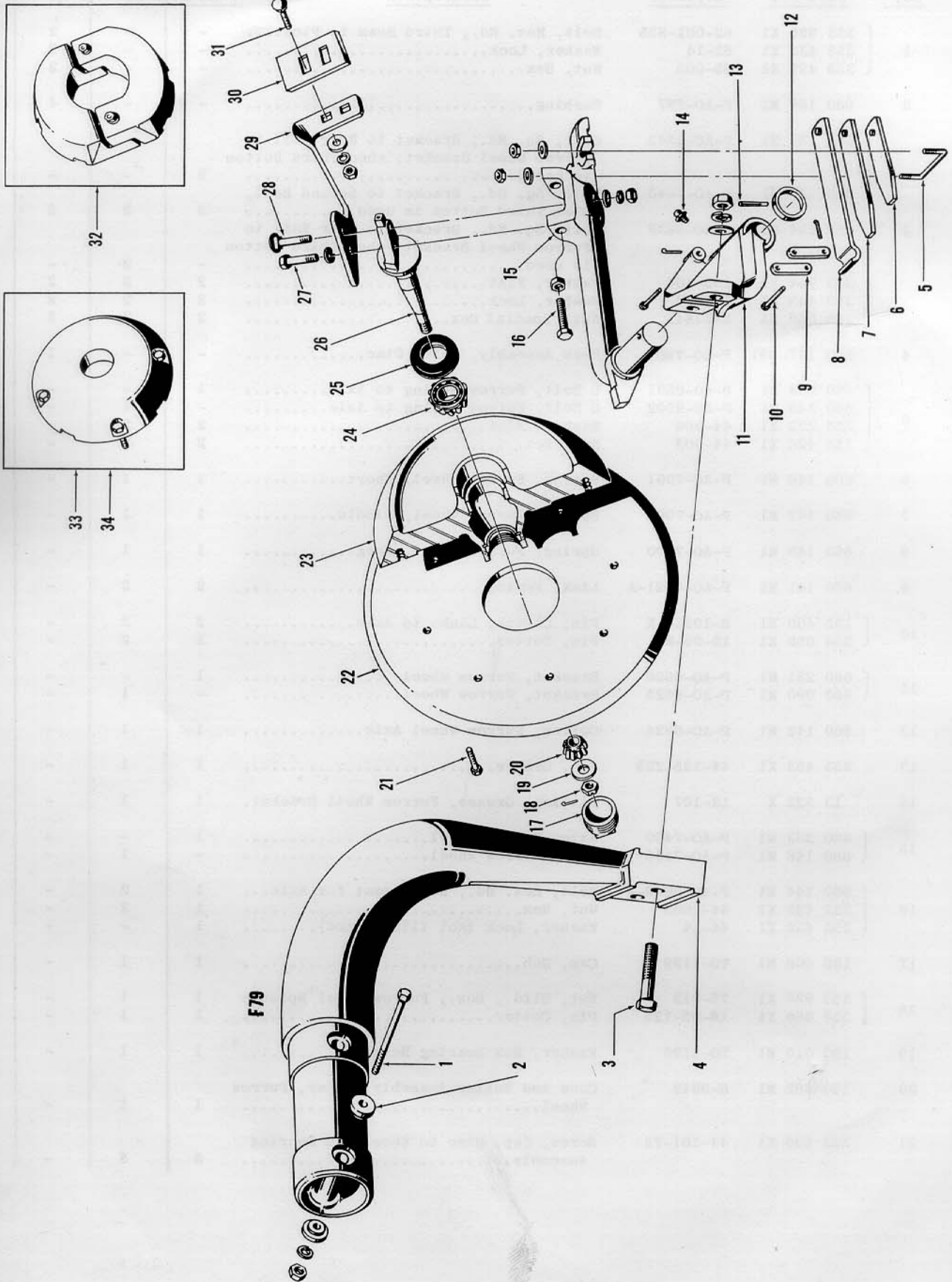
THIRD BEAM, FURROW WHEEL AND RELATED PARTS



THIRD BEAM, FURROW WHEEL AND RELATED PARTS

Ref. No.	Part No.	Replaces	Description	No. Req.			
				P-AO-20	P-AO-21	P-AO-98	P-AO-99
1	353 895 X1	62-001-825	Bolt, Hex. Hd., Third Beam to Plow....	-	-	2	2
	353 433 X1	62-14	Washer, Lock.....	-	-	2	2
	353 427 X1	62-003	Nut, Hex.....	-	-	2	2
2	660 168 M1	P-AO-797	Bushing.....	-	-	4	4
3	660 139 M1	P-AO-3842	Bolt, Sq. Hd., Bracket to Rear Rail to Furrow Wheel Bracket, when Third Bottom is used.....	2	-	-	-
	660 137 M1	P-AO-3840	Bolt, Sq. Hd., Bracket to Second Rail, when Third Bottom is used.....	2	2	2	2
	660 136 M1	P-AO-3839	Bolt, Sq. Hd., Bracket to Rear Rail to Furrow Wheel Bracket, when Third Bottom is used.....	-	2	-	-
	353 764 X1	100-104	Washer, Flat.....	2	2	2	2
	353 443 X1	100-14	Washer, Lock.....	2	2	2	2
	195 055 M1	S-33841	Nut, Special Hex.....	2	2	2	2
4	660 197 M91	P-AO-7803	Beam Assembly, Third Disc.....	-	-	1	1
5	660 234 M1	P-AO-9501	U Bolt, Furrow Spring to Axle.....	1	-	-	-
	660 149 M1	P-AO-9502	U Bolt, Furrow Spring to Axle.....	-	1	-	1
	353 772 X1	44-204	Washer, Flat.....	2	2	-	2
	353 426 X1	44-003	Nut, Hex.....	2	2	-	2
6	660 146 M1	P-AO-7001	Spring, Furrow Wheel, Short.....	1	1	-	1
7	660 147 M1	P-AO-7002	Spring, Furrow Wheel, Middle.....	1	1	-	1
8	660 145 M1	P-AO-7000	Spring, Furrow Wheel, Long.....	1	1	-	1
9	660 141 M1	P-AO-6621-A	Link, Spring.....	2	2	-	2
10	195 400 M1	S-10214-E	Pin, Clevis, Links to Axle.....	2	2	-	2
	354 058 X1	12-05-88	Pin, Cotter.....	2	2	-	2
11	660 231 M1	P-AO-6620	Bracket, Furrow Wheel.....	1	-	-	-
	660 090 M1	P-AO-6625	Bracket, Furrow Wheel.....	-	1	-	1
12	660 142 M1	P-AO-6624	Collar, Furrow Wheel Axle.....	1	1	-	1
13	353 453 X1	44-125-225	Pin, Groove.....	1	1	-	1
14	13 222 X	12-107	Fitting, Grease, Furrow Wheel Bracket.	1	1	-	1
15	660 233 M1	P-AO-7400	Axle, Furrow Wheel.....	1	-	-	-
	660 148 M1	P-AO-7406	Axle, Furrow Wheel.....	-	1	-	1
16	660 144 M1	P-AO-6629-A	Bolt, Hex. Hd., Adjustment for Axle...	1	2	-	2
	353 428 X1	44-1003	Nut, Hex.....	1	2	-	2
	353 432 X1	44-14	Washer, Lock (Not Illustrated).....	1	-	-	-
17	180 009 M1	TO-1139	Cap, Hub.....	1	1	-	-
18	353 928 X1	75-013	Nut, Slt'd., Hex., Furrow Wheel Spindle	1	1	-	-
	354 068 X1	16-05-125	Pin, Cotter.....	1	1	-	-
19	180 010 M1	TO-1195	Washer, Hub Bearing Retainer.....	1	1	-	-
20	150 662 M1	S-9842	Cone and Roller Assembly, Outer, Furrow Wheel.....	1	1	-	-
21	353 696 X1	44-101-75	Screw, Cap, Disc to Wheel and Bearing Assembly.....	8	8	-	-

THIRD BEAM, FURROW WHEEL AND RELATED PARTS

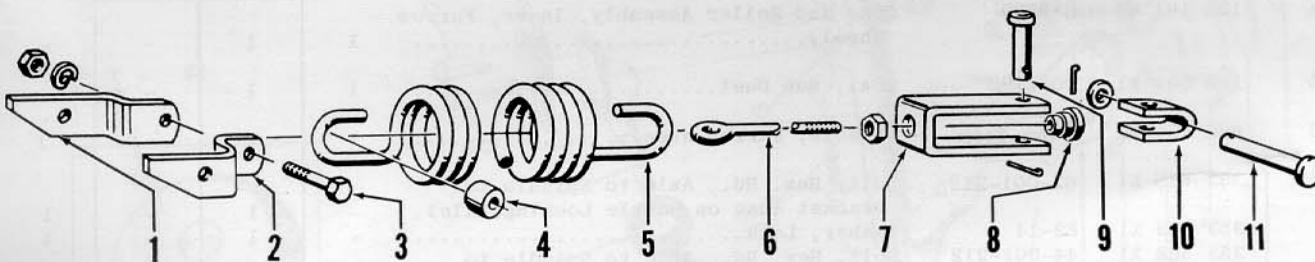


THIRD BEAM, FURROW WHEEL AND RELATED PARTS - Continued

Ref. No.	Part No.	Replaces	Description	No. Req.			
				P-AO-20	P-AO-21	P-AO-98	P-AO-99
22	660 151 M1	P-AO-6611	Disc, Furrow Wheel, 18".....	1	1	-	-
	660 188 M1	P-AO-6614	Disc, Furrow Wheel, 20".....	1	1	-	-
23	660 152 M91	P-AO-6613-A	Wheel and Bearing Assembly, Furrow (Inc. Wheel not serviced).....	1	1	-	-
	850 127 M1	S-9843	Cup, Bearing, Outer (shown in position)	1	1	-	-
	195 420 M1	S-10169	Ring, Snap (shown in position).....	1	1	-	-
	195 182 M1	S-9838	Cup, Bearing, Inner (shown in position)	1	1	-	-
24	195 181 M1	S-9839	Cone and Roller Assembly, Inner, Furrow Wheel.....	1	1	-	-
25	180 008 M1	TO-1190	Seal, Hub Dust.....	1	1	-	-
26	660 154 M1	P-AO-7403	Spindle, Furrow Wheel.....	1	1	-	1
27	353 616 X1	62-001-212	Bolt, Hex. Hd., Axle to Spindle to Bracket (use on Double Locking Axle).	-	1	-	1
	353 433 X1	62-14	Washer, Lock.....	-	1	-	1
	353 568 X1	44-001-212	Bolt, Hex. Hd., Axle to Spindle to Bracket (use on Single Locking Axle).	-	1	-	1
	353 841 X1	44-011-288	Bolt, Carr. (Not Illustrated).....	1	-	-	-
	353 772 X1	44-204	Washer, Flat (Not Illustrated).....	1	-	-	-
	353 432 X1	44-14	Washer, Lock.....	1	1	-	-
	353 426 X1	44-003	Nut, Hex. (Not Illustrated).....	1	-	-	-
28	353 573 X1	44-001-275	Bolt, Hex. Hd., Axle to Spindle to Bracket.....	1	1	-	1
	353 772 X1	44-204	Washer, Flat.....	-	1	-	1
	353 432 X1	44-14	Washer, Lock.....	1	1	-	1
	353 426 X1	44-003	Nut, Hex.....	1	1	-	1
29	660 155 M1	P-AO-3806-B	Bracket, Furrow Wheel Scraper.....	1	1	-	-
30	660 156 M1	P-AO-3807-A	Scraper, Furrow Wheel.....	1	1	-	-
31	353 827 X1	44-011-112	Bolt, Carr., Scraper to Bracket.....	2	2	-	-
	353 757 X1	44-104	Washer, Flat.....	2	2	-	-
	353 432 X1	44-14	Washer, Lock.....	2	2	-	-
	353 426 X1	44-003	Nut, Hex.....	2	2	-	-
32			Kit, Wheel Weight (tapped holes).....	1	-	-	-
	353 706 X1	44-101-200	Screw, Cap.....	2	-	-	-
	353 772 X1	44-204	Washer, Flat.....	2	-	-	-
33			Kit, Wheel Weight, Outside, For Plows w/ Light Wheel having drilled holes (Inc. Weight not serviced).....	1	-	-	-
	353 563 X1	44-001-150	Bolt, Hex. Hd. (Not Illustrated)....	4	-	-	-
	353 432 X1	44-14	Washer, Lock (Not Illustrated).....	4	-	-	-
	353 426 X1	44-003	Nut, Hex. (Not Illustrated).....	4	-	-	-
34			Kit, Wheel Weight, Outside, For Plows w/ Heavy Wheel having tapped holes (Inc. Weight not serviced).....	1	1	-	-
	353 699 X1	44-101-112	Screw, Cap.....	4	4	-	-

COUNTERWEIGHT SPRINGS AND RELATED PARTS

F79B



Ref. No.	Part No.	Replaces	Description	No. Req.			
				P-AO-20	P-AO-21	P-AO-98	P-AO-99
1	660 113 M1	P-AO-8024	Bracket, Spring, R.H.....	-	-	1	1
2	660 114 M1	P-AO-8025	Bracket, Spring, L.H.....	-	-	1	1
3	353 568 X1	44-001-212	Bolt, Hex. Hd., Brackets to Spring....	-	-	1	1
	353 432 X1	44-14	Washer, Lock.....	-	-	1	1
	353 426 X1	44-003	Nut, Hex.....	-	-	1	1
4	660 160 M1	P-AO-8023	Spacer, Spring Bracket.....	-	-	1	1
5	660 159 M1	P-AO-8021	Spring, Counterweight.....	-	-	1	1
6	660 131 M1	P-AO-8022	Eyebolt, Turnbuckle.....	-	-	1	1
	353 428 X1	44-1003	Nut, Jam Hex.....	-	-	1	1
7	660 158 M1	P-AO-8033	Bracket, Turnbuckle.....	-	-	1	1
8	660 143 M1	P-AO-8031	Swivel, Turnbuckle.....	-	-	1	1
9	195 411 M1	S-10214-S	Pin, Clevis, Bracket to Clevis.....	-	-	1	1
	354 066 X1	16-05-100	Pin, Cotter.....	-	-	1	1
10	660 157 M1	P-AO-8026	Clevis, Counterweight Spring.....	-	-	1	1
11	195 353 M1	S-10215-F	Pin, Clevis, Clevis to Plow Strut.....	-	-	1	1
	353 760 X1	62-104	Washer, Flat.....	-	-	1	1
	354 066 X1	16-05-100	Pin, Cotter.....	-	-	1	1